

Lone Star Plaza

6500-6510 Camp Bowie Blvd.
Fort Worth, Texas 76116



- **22, 797 SF neighborhood center**
- **Excellent hard corner intersection @ Camp Bowie & Bigham**
- **High traffic counts & strong visibility**
- **Abundant parking & prominent signage**
- **Diverse tenant mix attracts numerous customers**
- **Turn-key finish-out for qualified tenants**
- **Shallow bay depth maximizes storefront frontage**
- **Locally owned, leased and managed**

For Information:

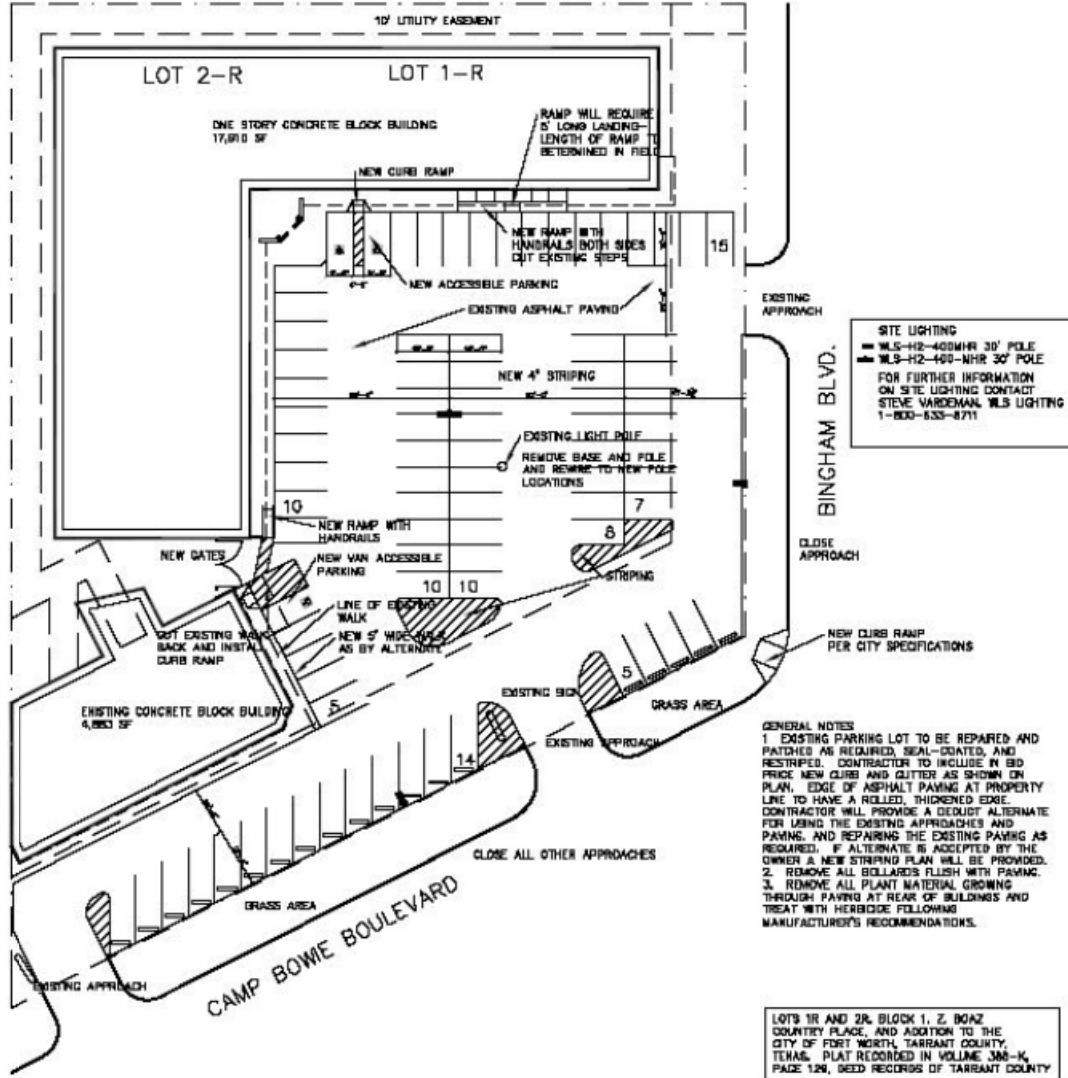
(817) 731-6199 Phone
(817) 731-0899 Fax

Hickman Investments, Ltd.

6777 Camp Bowie Blvd., Ste. 600
Fort Worth, Texas 76116



Excellent and easily accessible location on
Camp Bowie Blvd. just south of I-30.



SITE LIGHTING
 ■ WLS-H2-400MHR 30' POLE
 ■ WLS-H2-400-NHR 30' POLE
 FOR FURTHER INFORMATION
 ON SITE LIGHTING CONTACT
 STEVE VARDEMAN, WLS LIGHTING
 1-800-635-8711

GENERAL NOTES
 1. EXISTING PARKING LOT TO BE REPAIRED AND PATCHED AS REQUIRED, SEAL-COATED, AND RESTRIPTED. CONTRACTOR TO INCLUDE IN BID PRICE NEW CURB AND CUTTER AS SHOWN ON PLAN. EDGE OF ASPHALT PAVING AT PROPERTY LINE TO HAVE A ROLLED, THICKENED EDGE. CONTRACTOR WILL PROVIDE A DETAIL ALTERNATE FOR USING THE EXISTING APPROACHES AND PAVING, AND REPAIRING THE EXISTING PAVING AS REQUIRED. IF ALTERNATE IS ACCEPTED BY THE OWNER A NEW STRIPING PLAN WILL BE PROVIDED.
 2. REMOVE ALL BOLLARDS FLUSH WITH PAVING.
 3. REMOVE ALL PLANT MATERIAL GROWING THROUGH PAVING AT REAR OF BUILDINGS AND TREAT WITH HERBICIDE FOLLOWING MANUFACTURER'S RECOMMENDATIONS.

LOTS 1R AND 2R, BLOCK 1, Z. 8042 COUNTRY PLACE, AND ADDITION TO THE CITY OF FORT WORTH, TARRANT COUNTY, TEXAS. PLAT RECORDED IN VOLUME 306-K, PAGE 126, DEED RECORDS OF TARRANT COUNTY

DATE: _____
 PREPARED BY: _____

LONE STAR PLAZA
 8500 CAMP BOWE BLVD.
 FORT WORTH, TX.



Robert W. Kelly
 PROFESSIONAL ENGINEER
 STATE OF TEXAS
 NO. 19534
 LICENSED IN ELECTRICAL ENGINEERING

SHEET NO. _____
A-1
 OF 2

<u>Suite</u>	<u>Square Feet</u>
6504	2,880
6505 A	2,000
6505 B	1,165
6505 C	4,697
6505 E	4,802
6505 F	4,993
6508	1,000
6510	1,260
Total	= 22,797