

**3021 Alta Mere**  
Fort Worth, Texas 76116



➤ **15,080 SF free-standing building**

➤ **Zoning “I” – Light Industrial**

➤ **Head-in parking**

➤ **Prominent pylon signage**

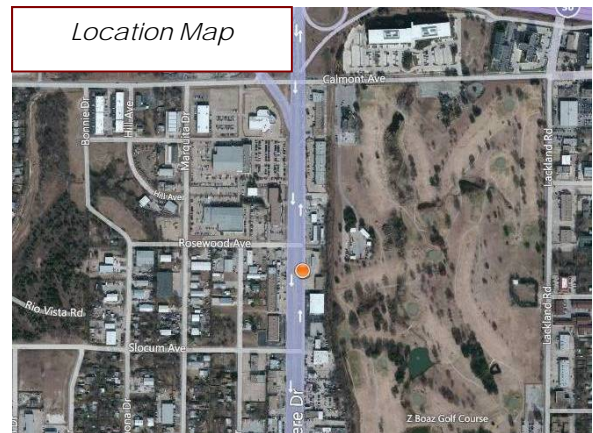
➤ **36,000 cars daily**

**For Information:**

(817) 731-6199 Phone  
(817) 731-0899 Fax

**Hickman Investments, Ltd.**

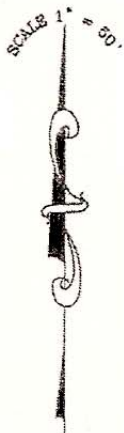
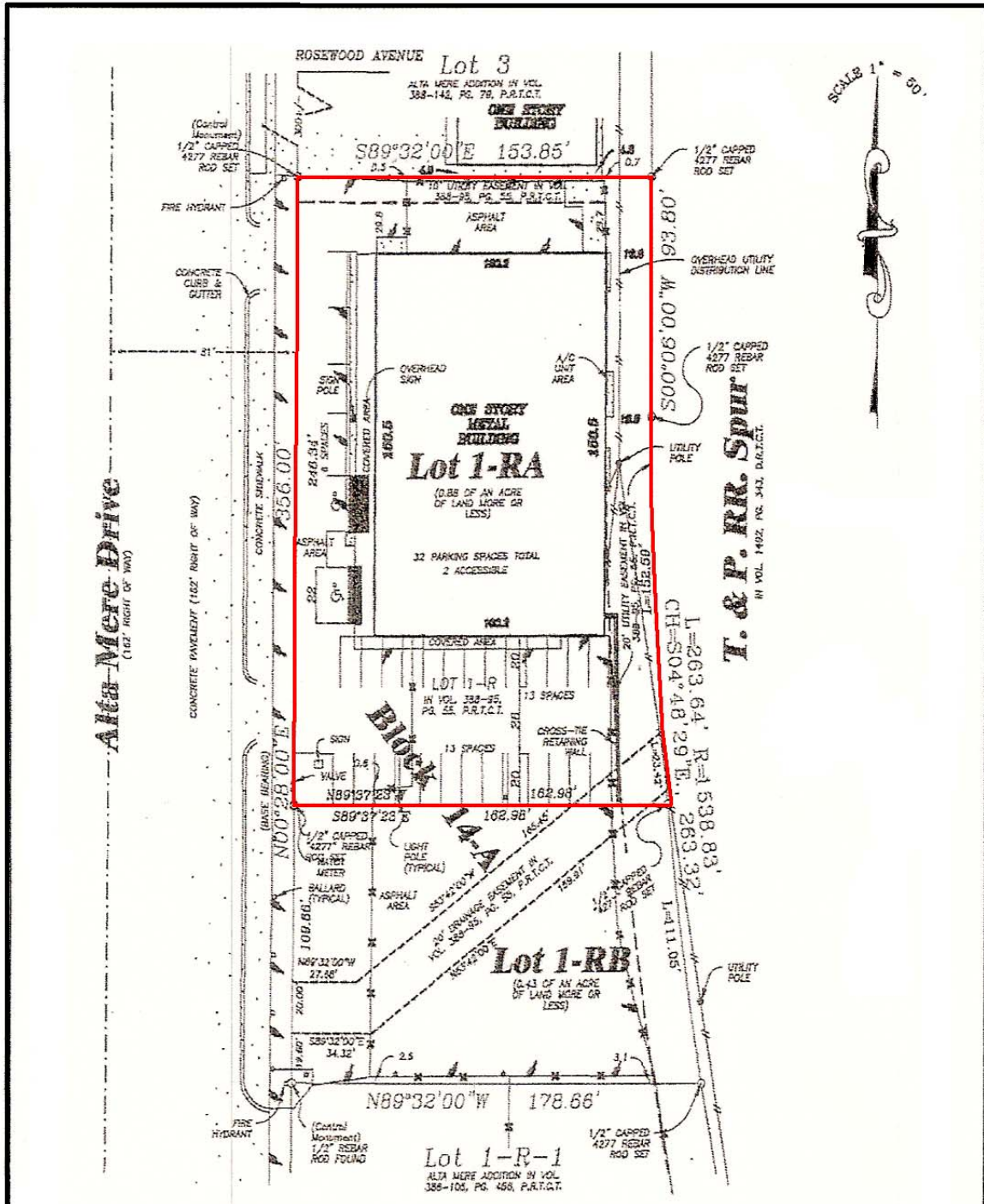
6777 Camp Bowie Blvd., Ste. 600  
Fort Worth, Texas 76116



Highly visible location on Alta Mere with easy access to Loop 820 & I-30 West in Northwest Fort Worth



# 3021 Alta Mere Survey



SKETCH SHOWING

PROPOSED LOTS 1-RA AND 1-RB, BLOCK 14-A, ALTA MERE ADDITION, AN ADDITION TO THE CITY OF FORT WORTH, TARRANT COUNTY, TEXAS, BEING A REPLAT OF LOT 1-R, BLOCK 14-A, ALTA MERE ADDITION, AN ADDITION TO THE CITY OF FORT WORTH, TARRANT COUNTY, TEXAS, ACCORDING TO THE PLAT RECORDED IN VOLUME 388-96, PAGE 55, PLAT RECORDS, TARRANT COUNTY, TEXAS, CONTAINING 1.31 ACRES OF LAND MORE OR LESS.

**SCHAUMBURG**  
ARCHITECTS

817 W BAGGETT AVE., FORT WORTH, TX 76104  
TEL (817) 538-7877 FAX (817) 538-7778